



## Enclosed Conductor Rail Systems

Cat.5a/19

VS3014 SERIES

## energy and data transfer systems



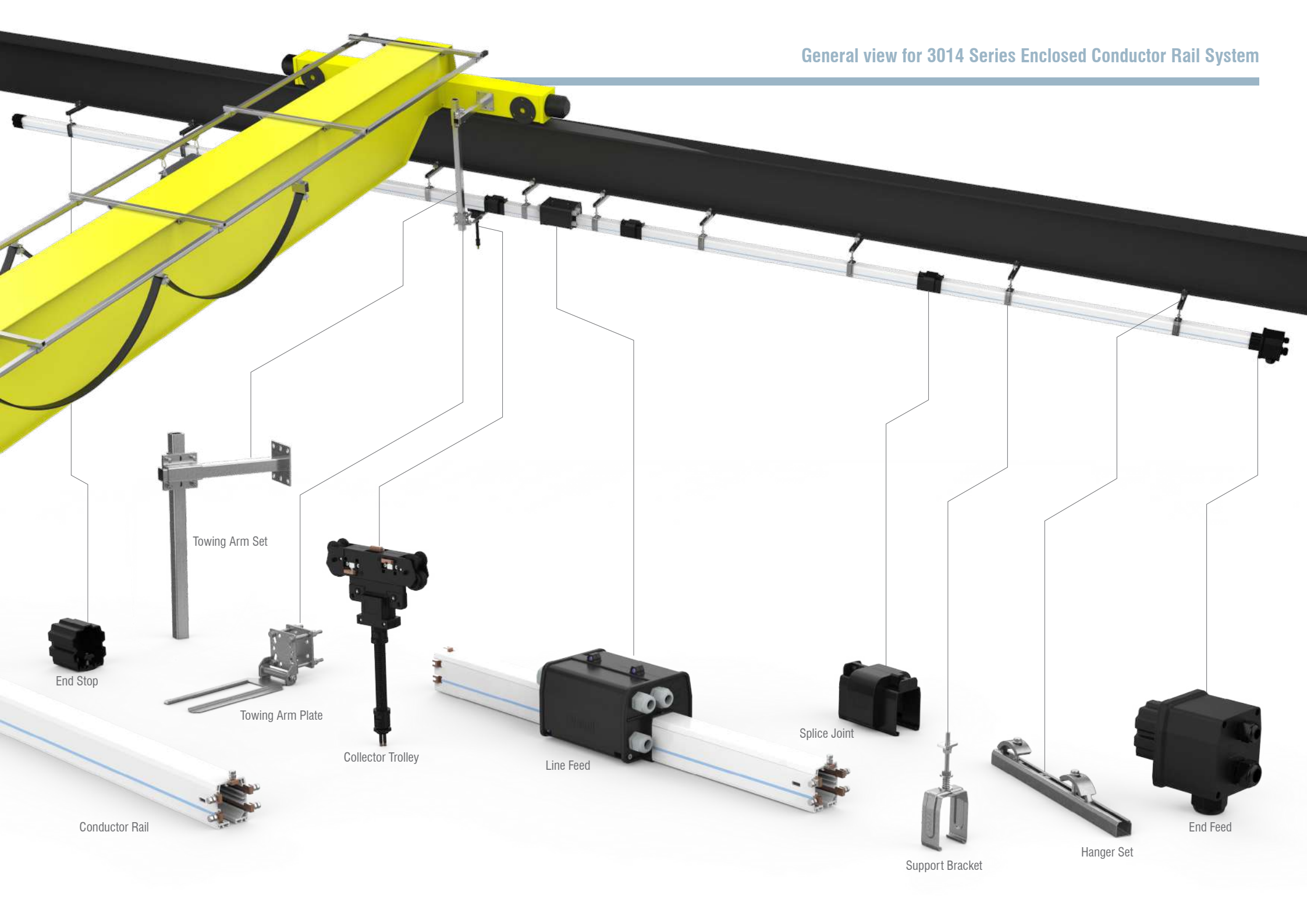
*Vasel energy and data transfer systems works with high efficiency for systems that require mobile control (plating units, high capacity stowing systems, automotive-industrial manufacture workshops, automation integrated systems such as textile etc., stowing cranes in shipyards and ports, portal cranes, travelling cranes, special designed stowing and loading machines, milling and construction sector facility applications, hydraulic and pneumatic application systems that require mobile control) by long range of maintenance period.*

- *It is also used mobile machine applications that provide fiber-optic cable communication except power and control applications.*
- *It is designed to provide assembly facility during installation and technical maintenance.*
- *Provides high performance in challenging conditions*
- *Provides saving from time and labor focused on economic and safe working*
- *It is manufactured within appropriate sizes and appropriate material for application standards applied in most countries of the world.*
- *It is manufactured from corrosion resistance materials against dust, moist, frosting, high temperature working conditions.*
- *With special extra standard product manufacturing for specific applications, it provides practical solutions to the sector*



**!** Please contact with our technical team for applications that will be used in extra standard challenging and hard working conditions. we will be pleased to help to you.

General view for 3014 Series Enclosed Conductor Rail System	3
Conductor Rail Application with End Feed	4
Conductor Rail Application with Line Feed	4
<b>3014 Series Enclosed Conductor Rail System</b>	
Conductor rails	5
Splice Joint	6
Support Bracket (suitable for VS1008K support arm)	6
Welding Support Arm	7
Support Attachment for Body Mounting	7
Support Brackets (suitable for VS1008C28 hanger sets)	8
Support Bracket (suitable for VS1008C40 hanger sets)	8
Support Bracket (DT) (suitable for VS1008C28 hanger sets)	9
Support Bracket(DT) (suitable for VS1008C40 hanger sets)	9
Hanger Sets with Support Clamps	10
Support Arms for Body Mounting	11
End Feed	12
End Stop	12
Line Feeds	13
Collector Trolleys (T Type)	14
Towing Arm Plate (T Type)	14
Collector Trolley (4P)(C1 Type)	15
Collector Trolley (4P)(C2 Type)	15
Collector Trolley (4P)(C3 Type)	15
Collector Trolley (5P)(C1 Type)	16
Collector Trolley (5P)(C2 Type)	16
Collector Trolley (5P)(C3 Type)	16
Towing Arm (C1 Type)	17
Towing Arm (C2 Type)	17
Towing Arm (C3 Type)	17
Towing Arm Set (AS40 type)	18
Towing Arm Set (BS40 type)	18
Towing Arm Set (AS50 type)	19
Towing Arm Set (BS50 type)	19
Towing Arm Set (AD40 type)	20
Towing Arm Set (BD40 type)	20
Towing Arm Set (AD50 type)	21
Towing Arm Set (BD50 type)	21



Towing Arm Set

End Stop

Towing Arm Plate

Collector Trolley

Line Feed

Splice Joint

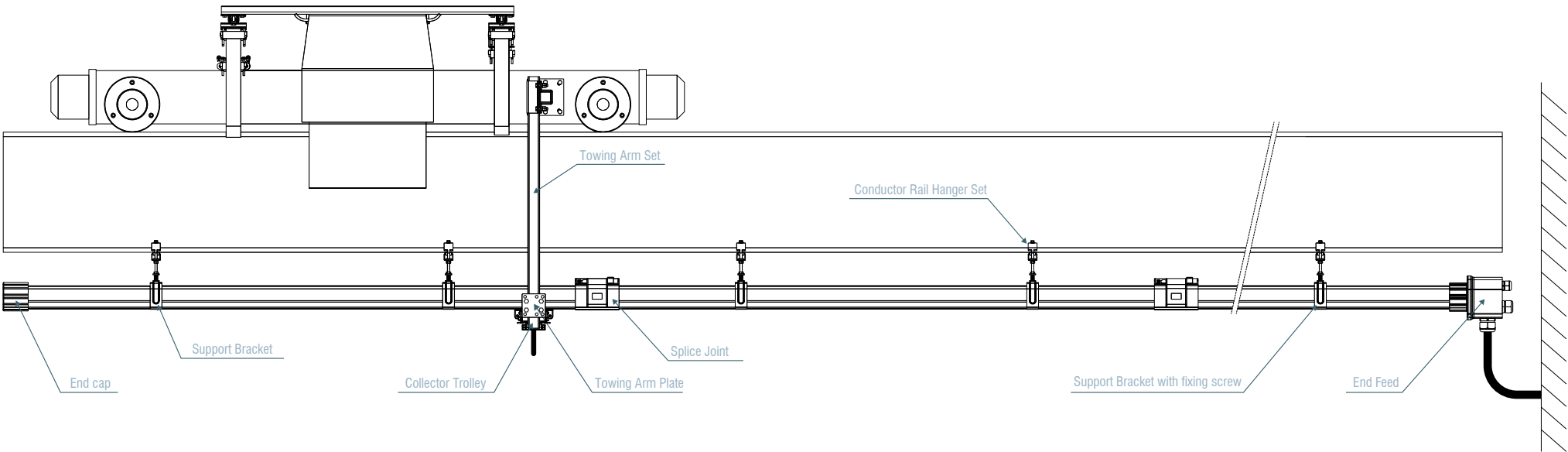
Support Bracket

Hanger Set

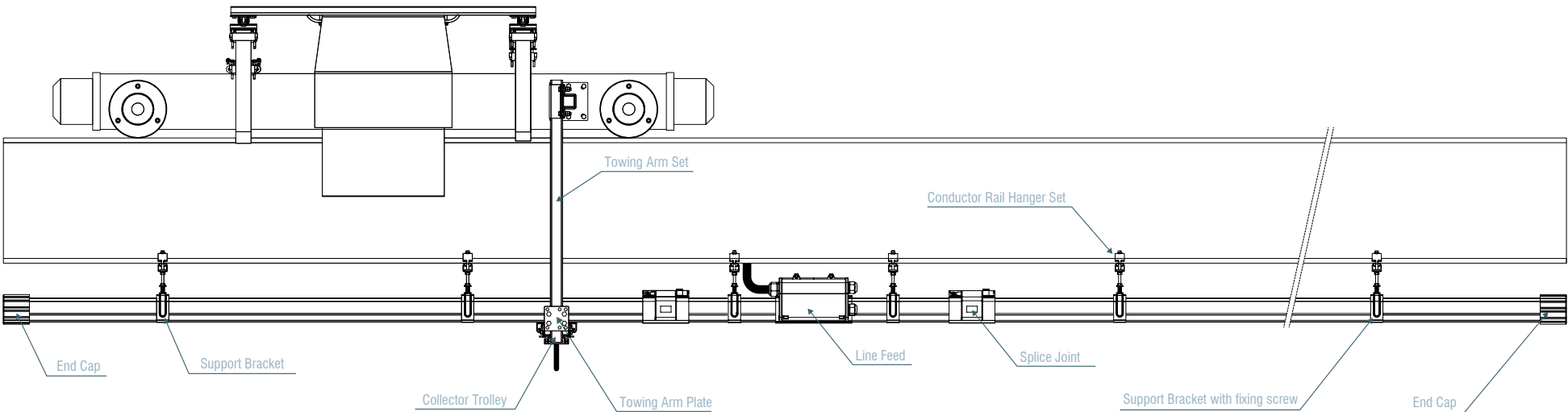
End Feed

Conductor Rail

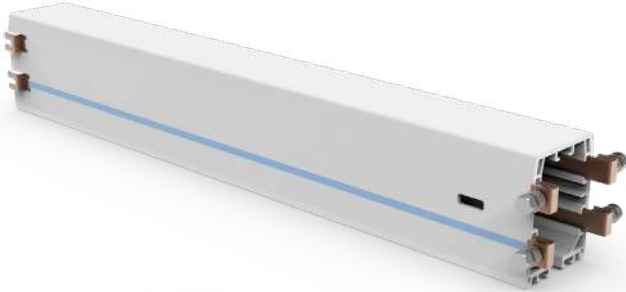
# Conductor Rail Application with End Feed



# Conductor Rail Application with Line Feed



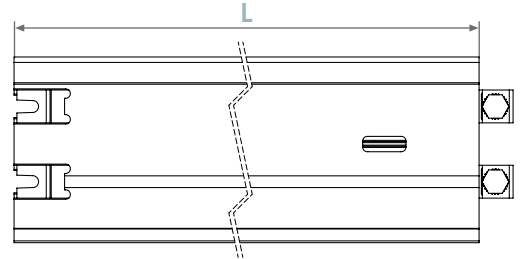
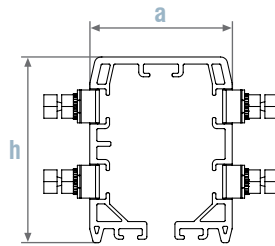
## Conductor Rail VS3014R2-4



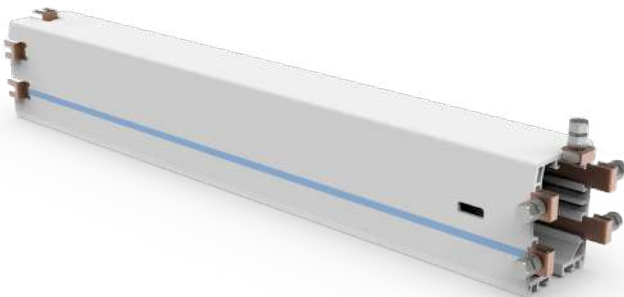
\*This product is between different sizes (1000 mm - 2000 mm - 3000mm) can be produced.  
Please contact our company with system requirements

Product Code VS3014R2-4	Strip Material	Copper
	Casing Material	PVC
	Temperature resistance	-30°C to +55°C
	Nom. Voltage (V)	600
	Poles	4
	Dimensions (mm)	a 61 h 80 L 4000

Product Code	Nom. Current (A)	Conductor cross section mm <sup>2</sup>			Weight (kg/m)
		L1 L2 L3	⊕	⊕	
VS3014R2-445-4	45	1x14	1x14		8,10
VS3014R2-475-4	75	1.1x14	1x14		8,23
VS3014R2-4100-4	100	2x14	1x14		9,60



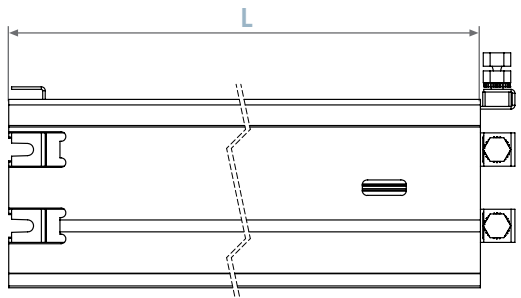
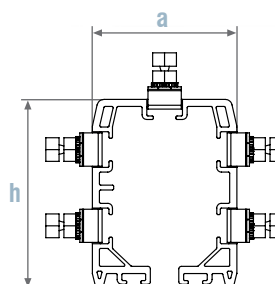
## Conductor Rail VS3014R2-5



\*This product is between different sizes (1000 mm - 2000 mm - 3000mm) can be produced.  
Please contact our company with system requirements

Product Code VS3014R2-5	Strip Material	Copper
	Casing Material	PVC
	Temperature resistance	-30°C to +55°C
	Nom. Voltage (V)	600
	Poles	5
	Dimensions (mm)	a 61 h 80 L 4000

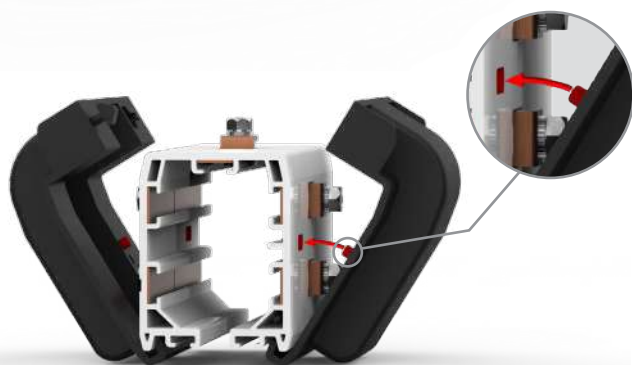
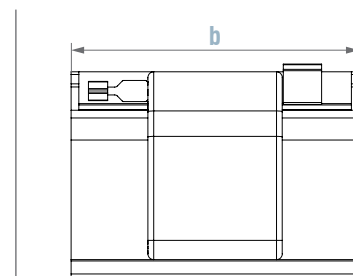
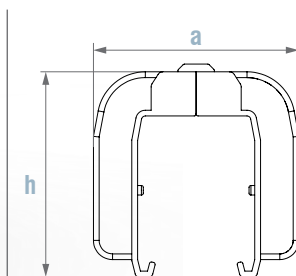
Product Code	Nom. Current (A)	Conductor cross section mm <sup>2</sup>				Weight (kg/m)
		L1 L2 L3 4	⊕	⊕	⊕	
VS3014R2-545-4	45	1x14	1x14			8,60
VS3014R2-575-4	75	1.1x14	1x14			8,80
VS3014R2-5100-4	100	2x14	1x14			10,62



## Splice Joint VS3014E2

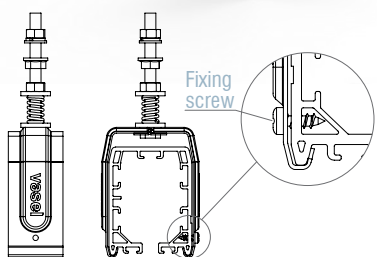


Product Code	Material	Weight (kg)	Dimensions (mm)		
VS3014E2	PA-GF	0,24	a	b	h
			107	150	107



## Support Bracket (suitable for 1008K support arm) VS3014A2

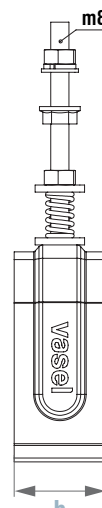
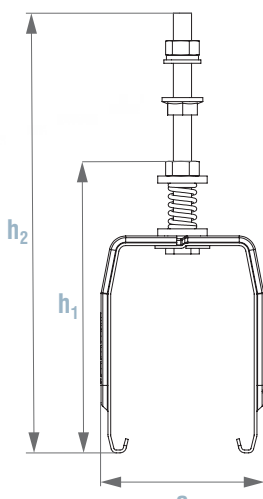
Product Code	Material	Weight (kg)	Dimensions (mm)			
VS3014A2	Steel (galvanised)	0,18	a	b	h <sub>1</sub>	h <sub>2</sub>
			70	40	125	195

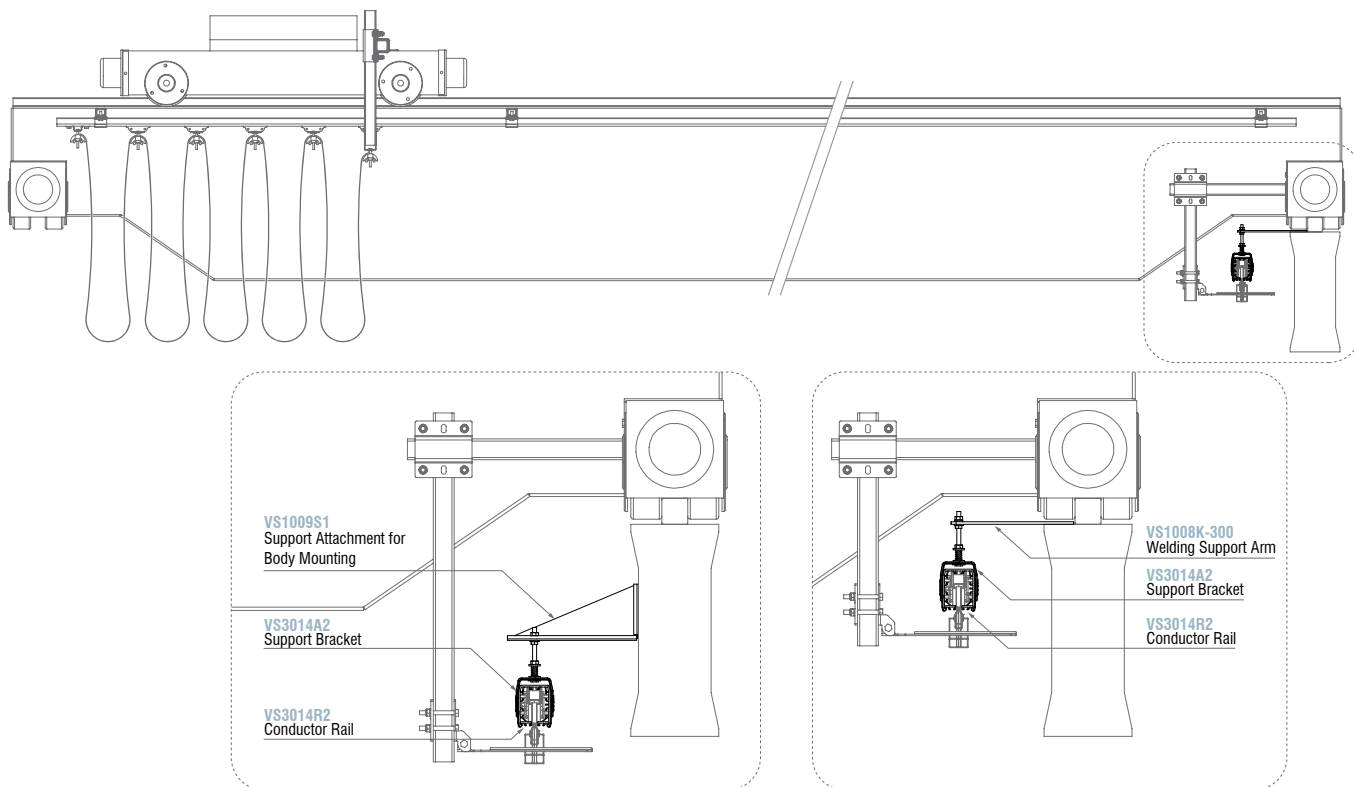


### VS3014A2F

Support Bracket with fixing screw  
(Suitable for VS1008K support arm)

*\*This Support Bracket with fixing screw should be ordered in 1 pieces for each line*

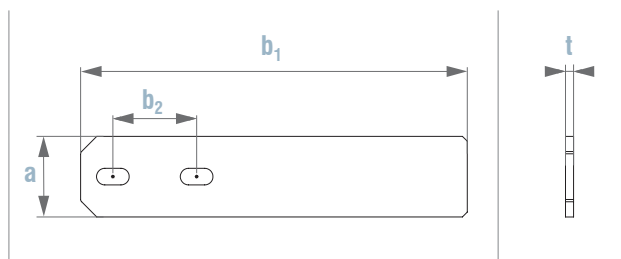




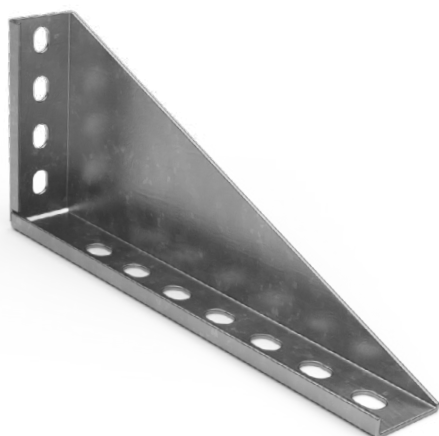
## Welding Support Arm VS1008K-290



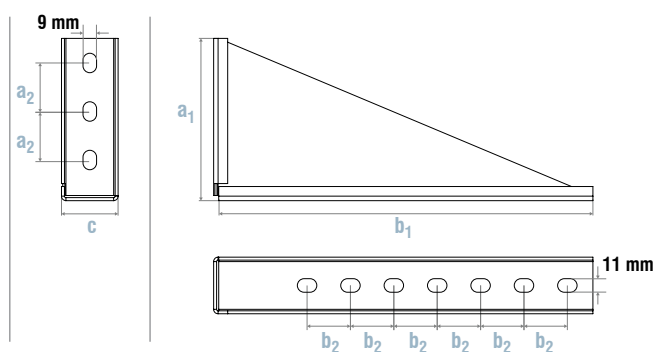
Product Code	Material	Weight (kg)	Dimensions (mm)			
			a	b <sub>1</sub>	b <sub>2</sub>	t
VS1008K-290	Steel	0,54	50	290	50	5



## Support Attachment for Body Mounting (1009 series) VS1009S1



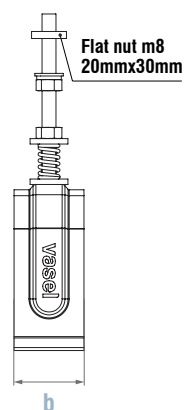
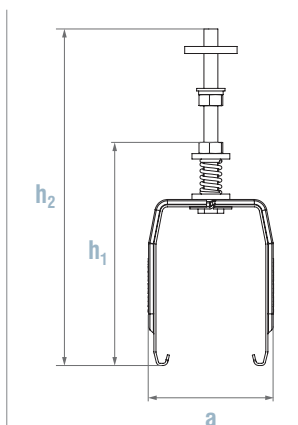
Product Code	Material	Weight (kg)	Dimensions (mm)				
			a <sub>1</sub>	a <sub>2</sub>	b <sub>1</sub>	b <sub>2</sub>	c
VS1009S1	Steel (galvanised)	0,41	110	25	250	58	30



## Support Bracket (suitable for 1008C28 hanger set) VS3014D2

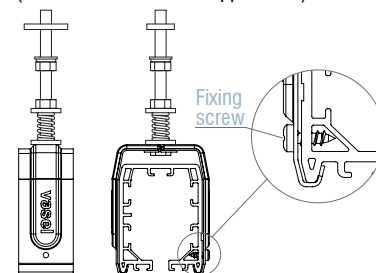


Product Code	Material	Weight (kg)	Dimensions (mm)			
			a	b	h <sub>1</sub>	h <sub>2</sub>
VS3014D2	Steel (galvanised)	0,19	70	40	125	195



### VS3014D2F

Support Bracket with fixing screw  
(Suitable for 1008C28 support arm)

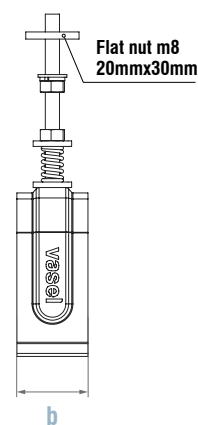
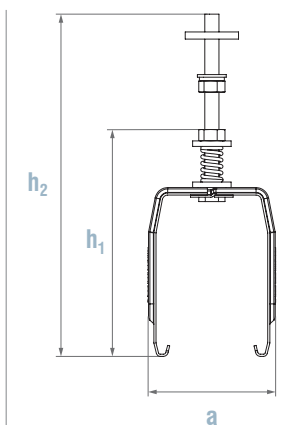


*\*This Support Bracket with fixing screw should be ordered in 1 pieces for each line*

## Support Bracket (suitable for 1008C40 hanger set) VS3014D4

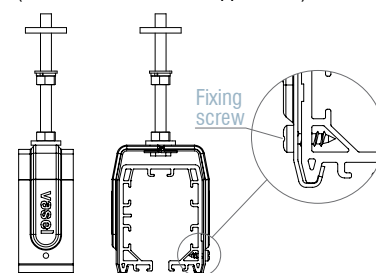


Product Code	Material	Weight (kg)	Dimensions (mm)			
			a	b	h <sub>1</sub>	h <sub>2</sub>
VS3014D4	Steel (galvanised)	0,20	70	40	125	195

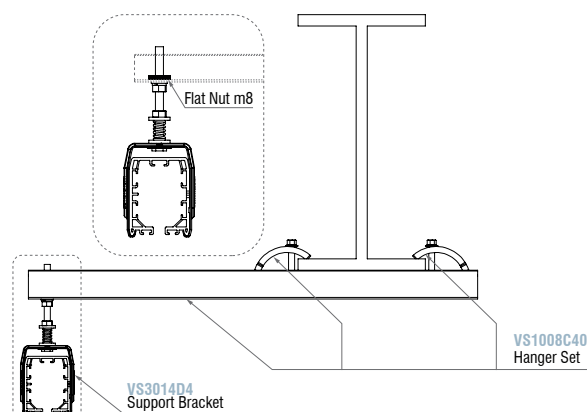
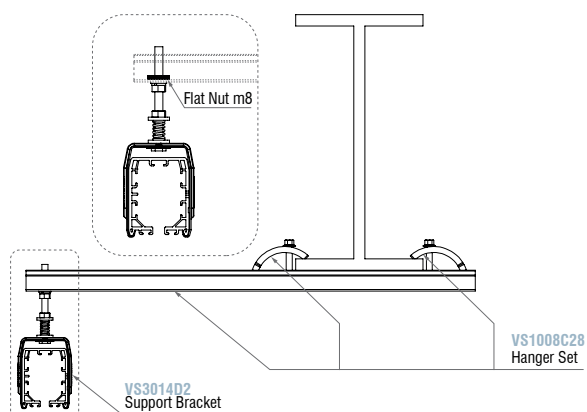


### VS3014D4F

Support Bracket with fixing screw  
(Suitable for 1008C40 support arm)



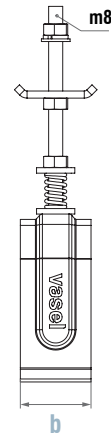
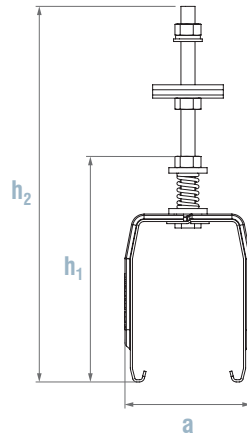
*\*This Support Bracket with fixing screw should be ordered in 1 pieces for each line*



■ **Support Bracket (DT) (suitable for 1008C28 hanger set)**  
**VS3014DT2**

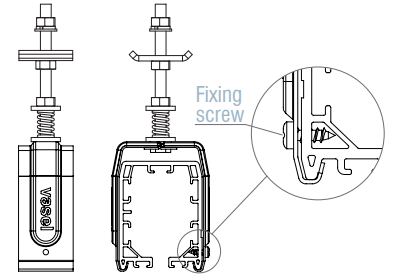


Product Code	Material	Weight (kg)	Dimensions (mm)			
			a	b	h <sub>1</sub>	h <sub>2</sub>
VS3014D2	Steel (galvanised)	0,25	70	40	125	215



**VS3014DT2F**

Support Bracket with fixing screw  
(Suitable for 1008C28 support arm)

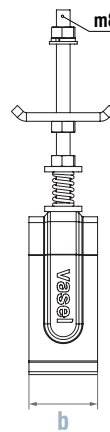
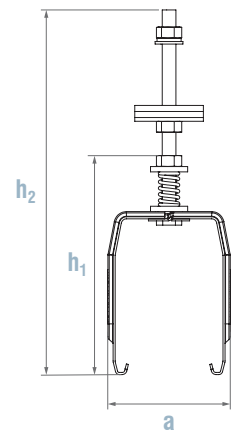


*\*This Support Bracket with fixing screw should be ordered in 1 pieces for each line*

■ **Support Bracket (suitable for 1008C40 hanger set)**  
**VS3014DT4**

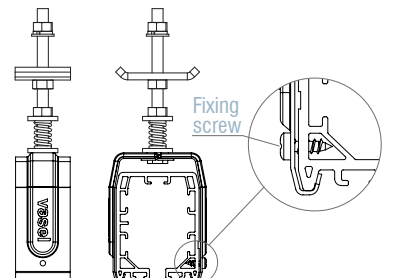


Product Code	Material	Weight (kg)	Dimensions (mm)			
			a	b	h <sub>1</sub>	h <sub>2</sub>
VS3014DT4	Steel (galvanised)	0,27	70	40	125	215

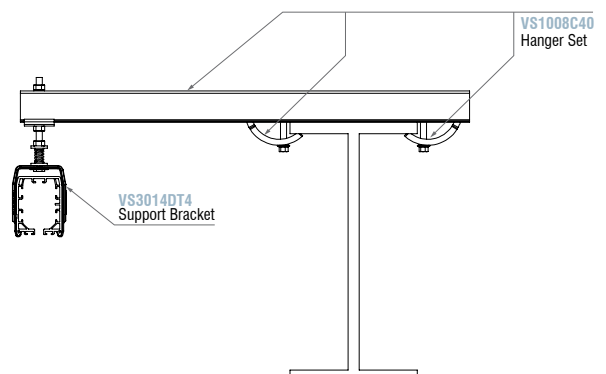
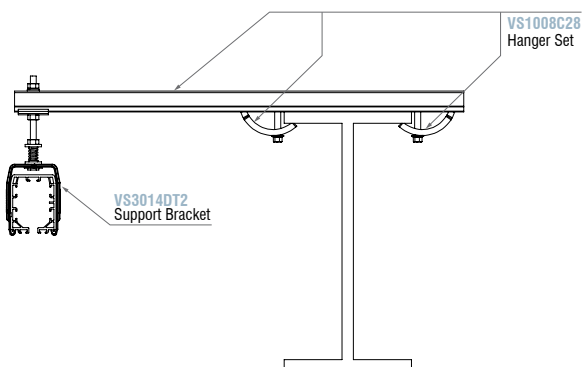


**VS3014DT4F**

Support Bracket with fixing screw  
(Suitable for 1008C40 support arm)



*\*This Support Bracket with fixing screw should be ordered in 1 pieces for each line*



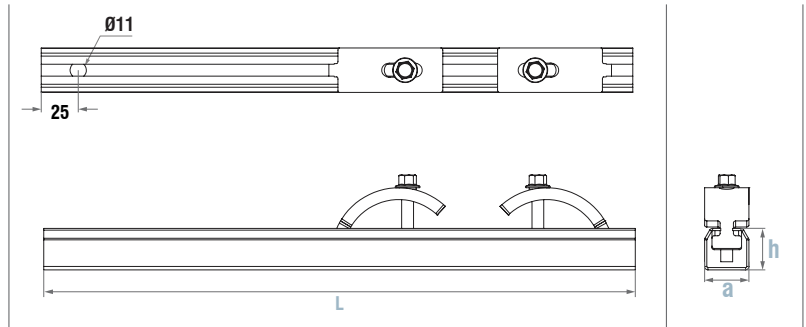
## ■ Hanger Set with Support Clamps (1010 series)

### VS1008C28/.(L).

Product Code	Material	Dimensions (mm)	
		a	h
VS1008C28/.(L).	Steel (galvanised)	30	28



*\*This product is between different sizes can be produced. Please contact our company with system requirements*



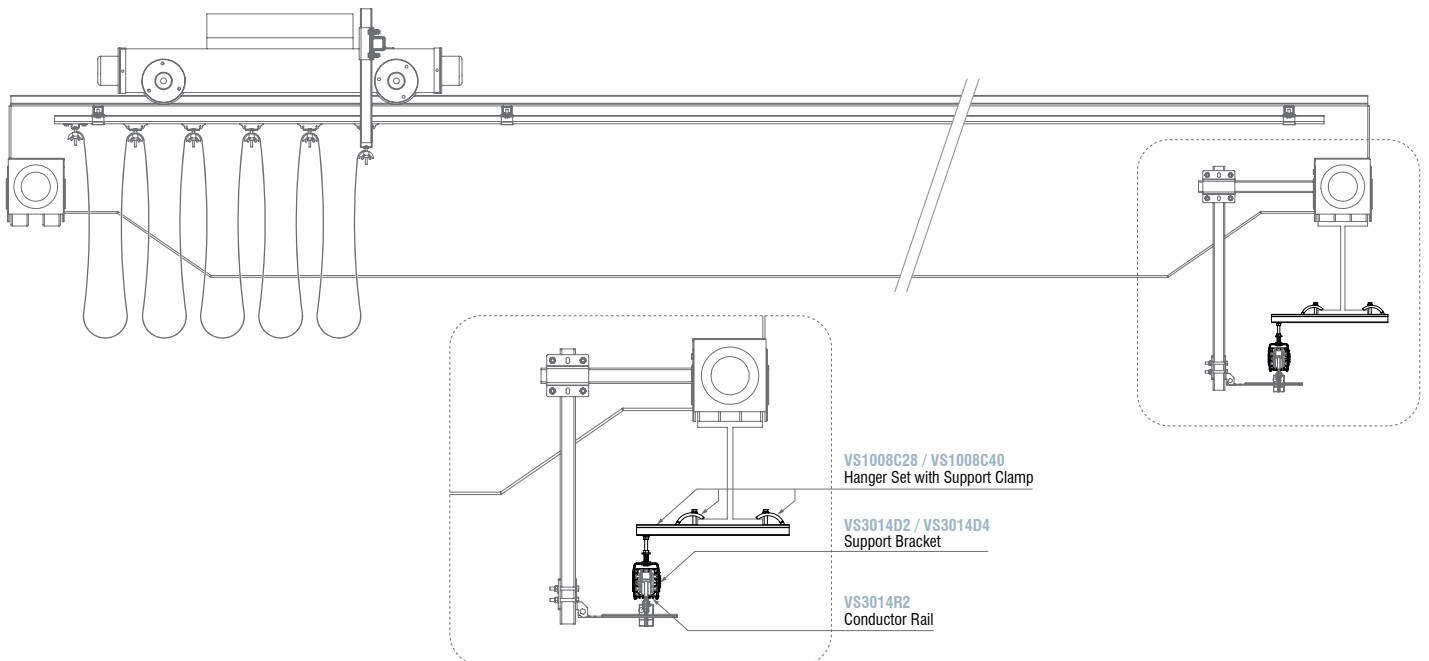
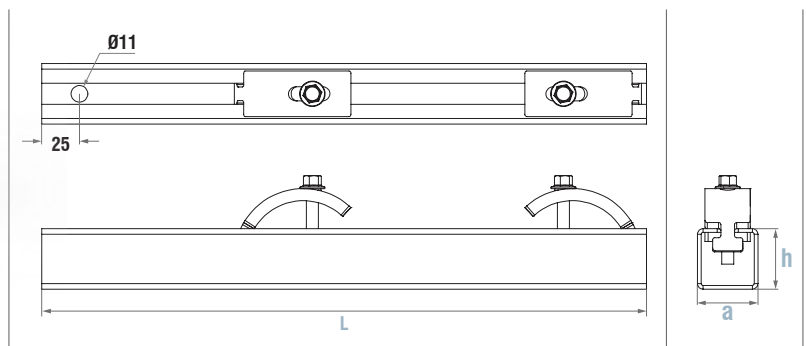
## ■ Hanger Set with Support Clamps (1012 series)

### VS1008C40/.(L).

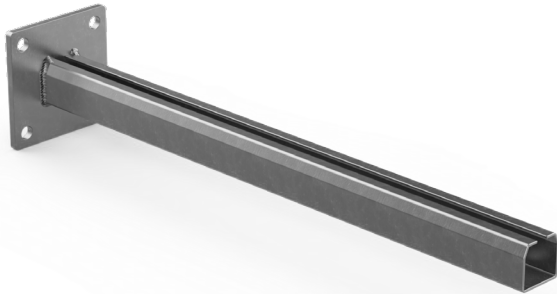
Product Code	Material	Dimensions (mm)	
		a	h
VS1008C40/.(L).	Steel (galvanised)	40	40



*\*This product is between different sizes can be produced. Please contact our company with system requirements*

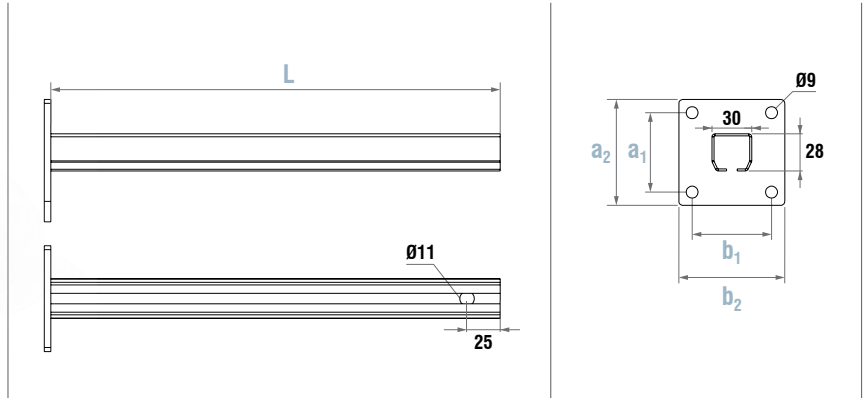


## Support Arm for Body Mounting (1010 series) VS1010S4D/(L)



\*This product is between different sizes can be produced.  
Please contact our company with system requirements

Product Code	Material	Dimensions (mm)			
		a <sub>1</sub>	a <sub>2</sub>	b <sub>1</sub>	b <sub>2</sub>
VS1010S4D/(L)	Steel (galvanised)	60	80	60	80

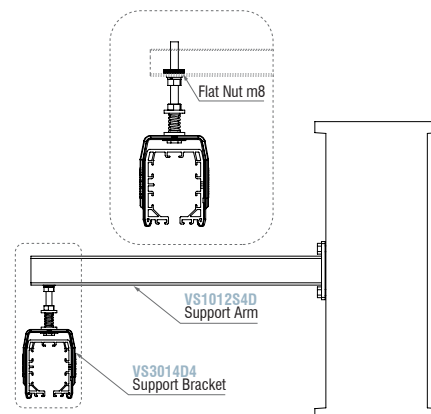
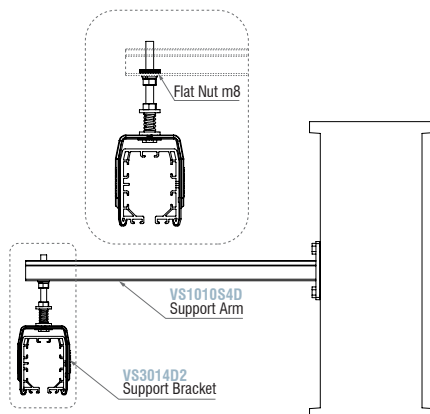
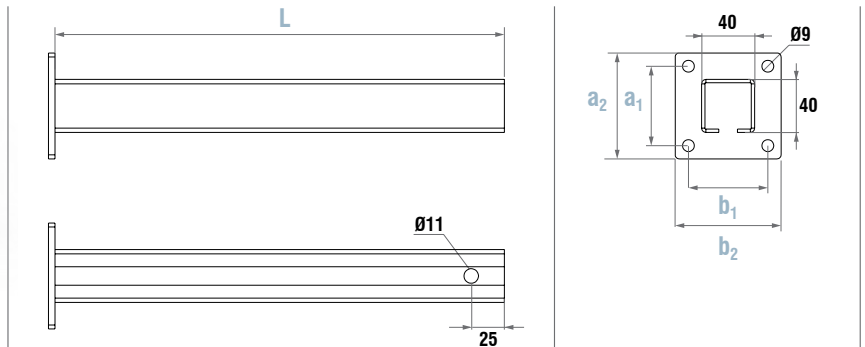


## Support Arm for Body Mounting (1012 series) VS1012S4D/(L)



\*This product is between different sizes can be produced.  
Please contact our company with system requirements

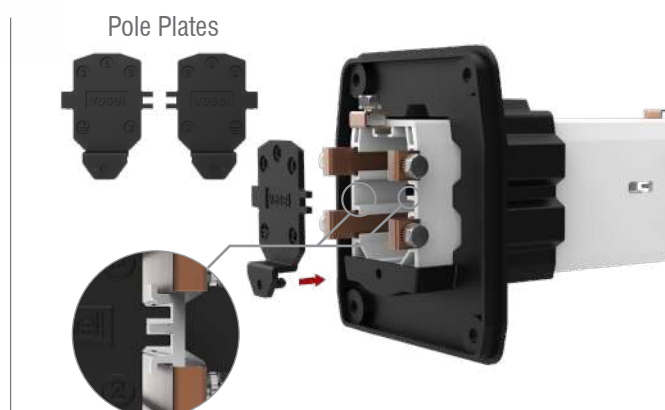
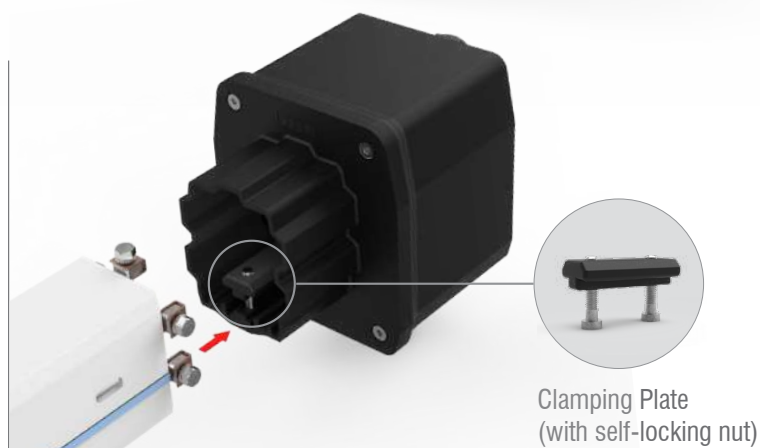
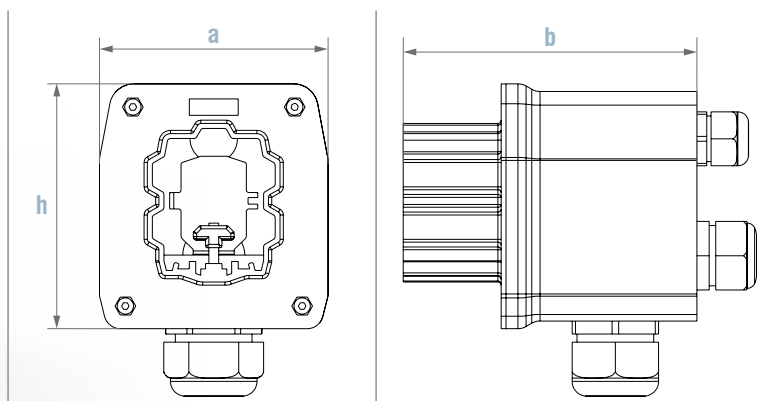
Product Code	Material	Dimensions (mm)			
		a <sub>1</sub>	a <sub>2</sub>	b <sub>1</sub>	b <sub>2</sub>
VS1012S4D/(L)	Steel (galvanised)	60	80	60	80



## ■ End Feed VS3014FE3



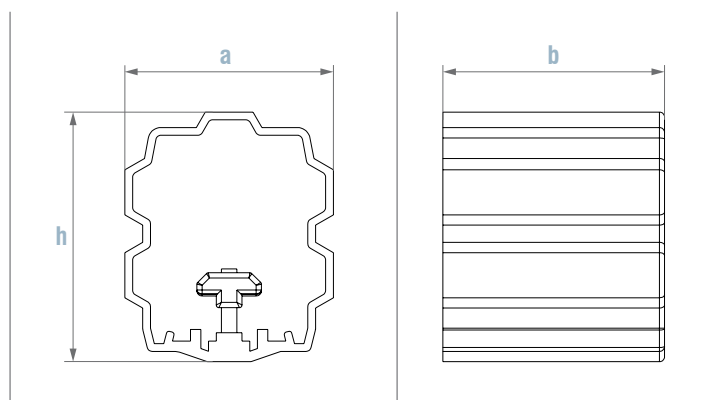
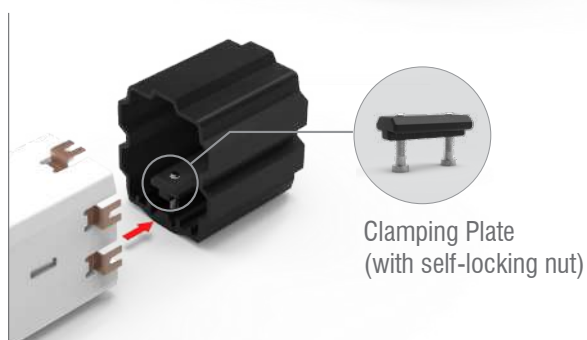
Product Code	Material	Weight (kg/m)	Dimensions (mm)		
VS3014FE3	PA-GF	0,82	a	b	h
			140	180	150



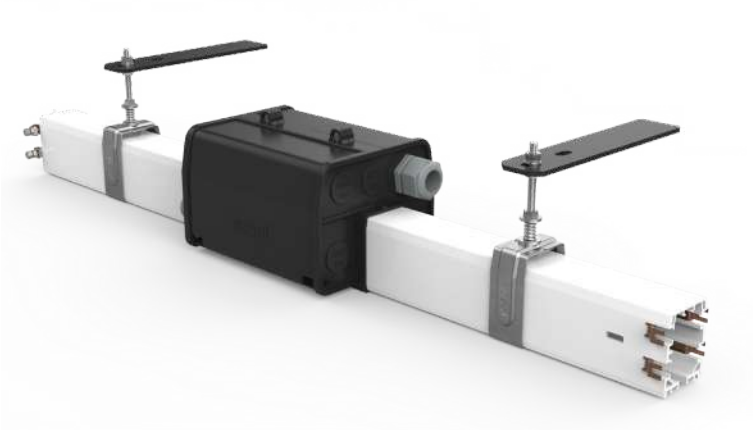
## ■ End Stop VS3014L1



Product Code	Material	Weight (kg/m)	Dimensions (mm)		
VS3014L1	PA-GF	0,17	a	b	h
			81	86	97



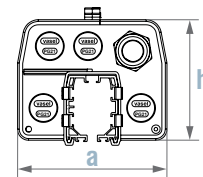
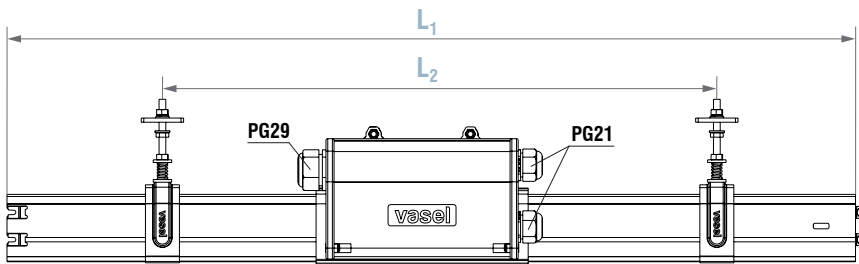
## Line Feed VS3014FL3-P4



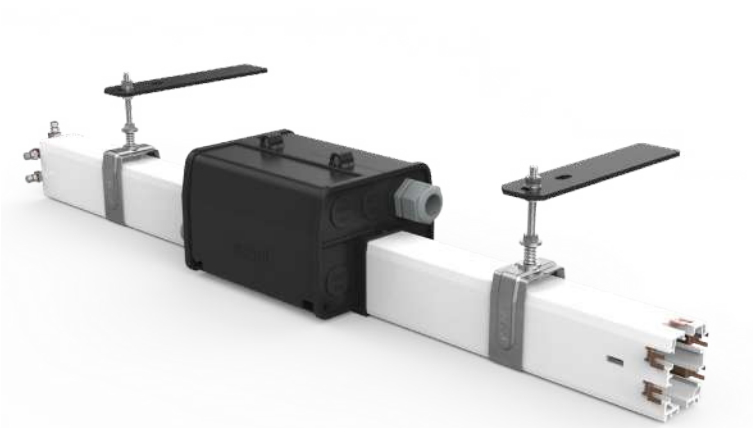
\*Support brackets and support arms which are mounted on the line feed is placed on the photograph could be changed up to application type. (See page 6-8-9)

<b>Product Code</b> VS3014FL3-P4	<b>Strip Material</b>	Copper
	<b>Casing Material</b>	PVC
	<b>Temperature resistance</b>	-30°C to +55°C
	<b>Nom. Voltage (V)</b>	600
	<b>Poles</b>	4
	<b>Dimensions (mm)</b>	a
		h
		L <sub>1</sub>
		L <sub>2</sub>
		176
		148
		1000
		650

<b>Product Code</b>	<b>Nom. Current (A)</b>	<b>Conductor cross section mm<sup>2</sup></b>		
		L1 L2 L3		
VS3014FL3-P4-45	45	1x14	1x14	
VS3014FL3-P4-75	75	1.1x14	1x14	
VS3014FL3-P4-100	100	2x14	1x14	



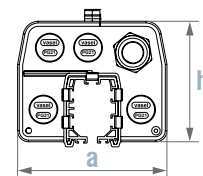
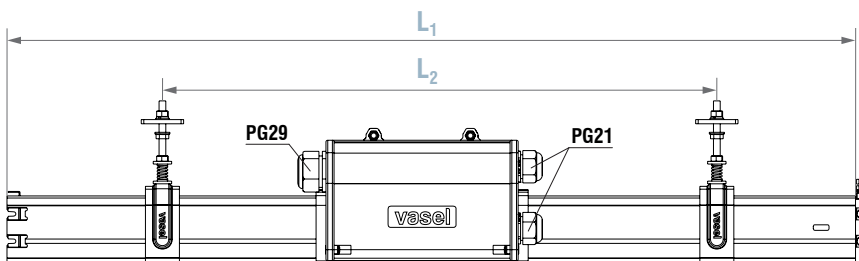
## Line Feed VS3014FL3-P5



\*Support brackets and support arms which are mounted on the line feed is placed on the photograph could be changed up to application type. (See page 6-8-9)

<b>Product Code</b> VS3014FL3-P5	<b>Strip Material</b>	Copper
	<b>Casing Material</b>	PVC
	<b>Temperature resistance</b>	-30°C to +55°C
	<b>Nom. Voltage (V)</b>	600
	<b>Poles</b>	5
	<b>Dimensions (mm)</b>	a
		h
		L <sub>1</sub>
		L <sub>2</sub>
		176
		148
		1000
		650

<b>Product Code</b>	<b>Nom. Current (A)</b>	<b>Conductor cross section mm<sup>2</sup></b>		
		L1 L2 L3 4		
VS3014FL3-P5-45	45	1x14	1x14	
VS3014FL3-P5-75	75	1.1x14	1x14	
VS3014FL3-P5-100	100	2x14	1x14	

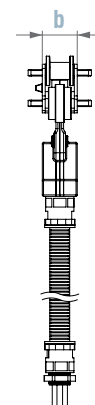
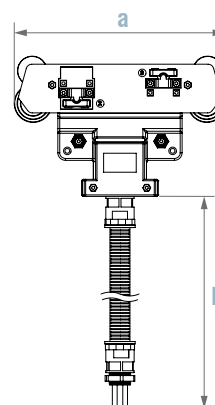


### Collector Trolley (4P)(T Type) VS3014T1-P4



Product Code	Material	Weight (kg)
VS3014T1-P4	PA-GF	0,95

Dimensions (mm)		
a	b	L
225	37	1000

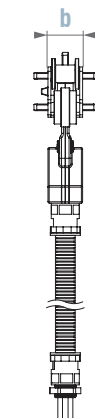
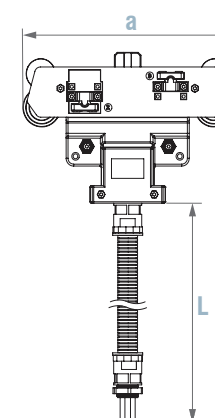


### Collector Trolley (5P)(T Type) VS3014T1-P5

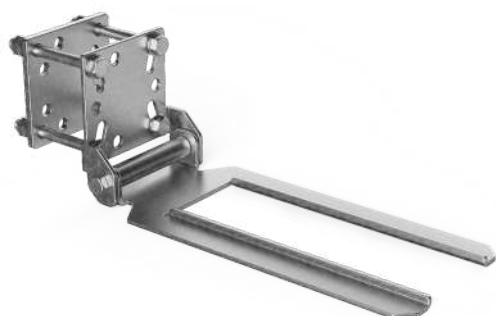


Product Code	Material	Weight (kg)
VS3014T1-P5	PA-GF	1,00

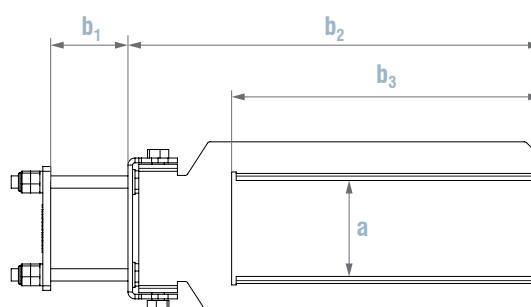
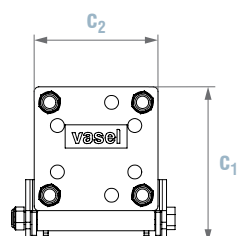
Dimensions (mm)		
a	b	L
225	37	1000



### Towing Arm Plate (T Type) VS3014P1T



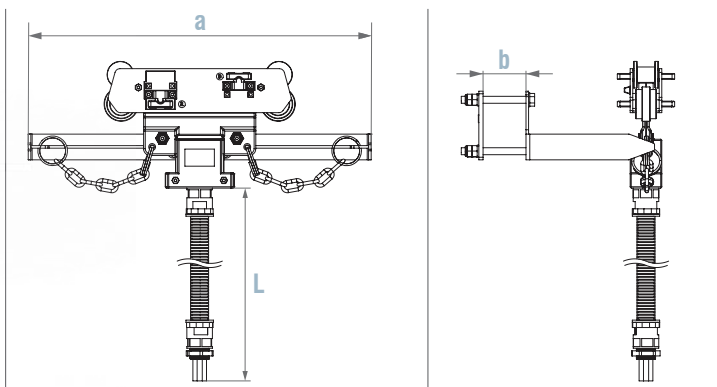
Product Code	Material	Weight (kg)	Dimensions (mm)					
			a	b <sub>1</sub>	b <sub>2</sub>	b <sub>3</sub>	c <sub>1</sub>	c <sub>2</sub>
VS3014P1T	Steel (galvanised)	1,00	62	30-50	267	200	100	80



### Collector Trolley (4P)(C1 Type) VS3014T1-C4



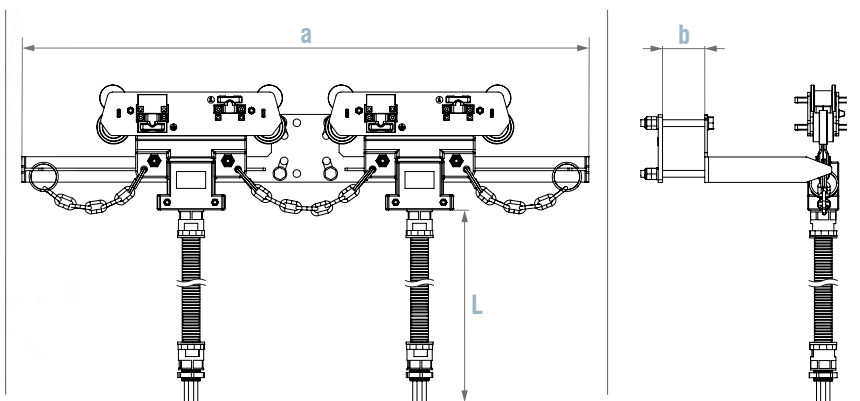
Product Code	Weight (kg)	Dimensions (mm)		
		a	b	L
VS3014T1-C4	2,35	400	30-50	1000



### Collector Trolley (4P)(C2 Type) VS3014T2-C4



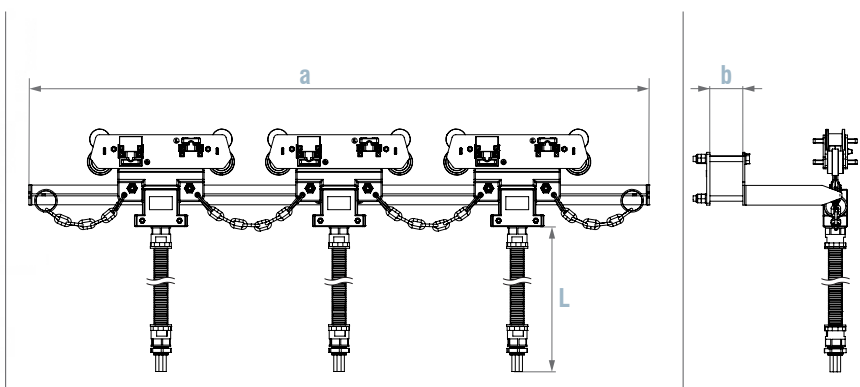
Product Code	Weight (kg)	Dimensions (mm)		
		a	b	L
VS3014T2-C4	3,65	670	30-50	1000



### Collector Trolley (4P)(C3 Type) VS3014T3-C4



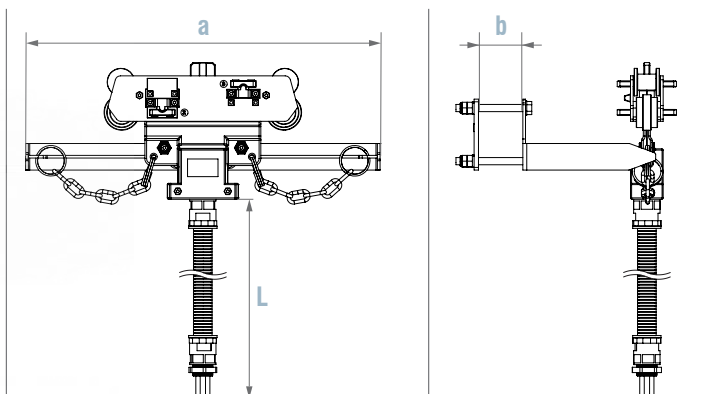
Product Code	Weight (kg)	Dimensions (mm)		
		a	b	L
VS3014T3-C4	5,00	940	30-50	1000



### Collector Trolley (5P)(C1 Type) VS3014T1-C5



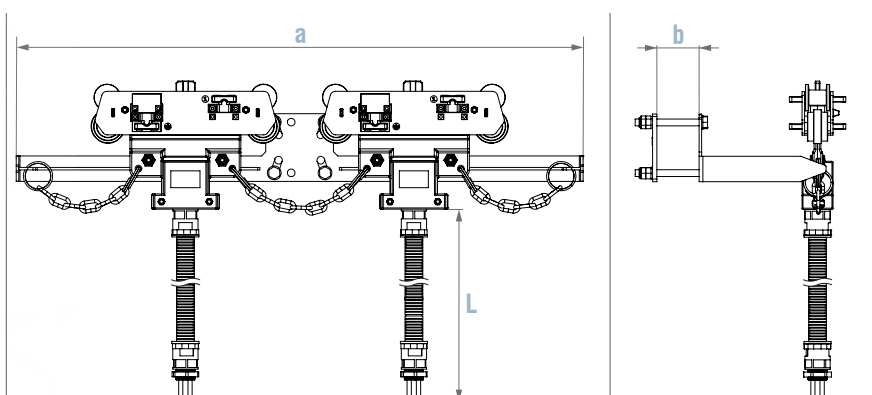
Product Code	Weight (kg)	Dimensions (mm)		
		a	b	L
VS3014T1-C5	2,39	400	30-50	1000



### Collector Trolley (5P)(C2 Type) VS3014T2-C5



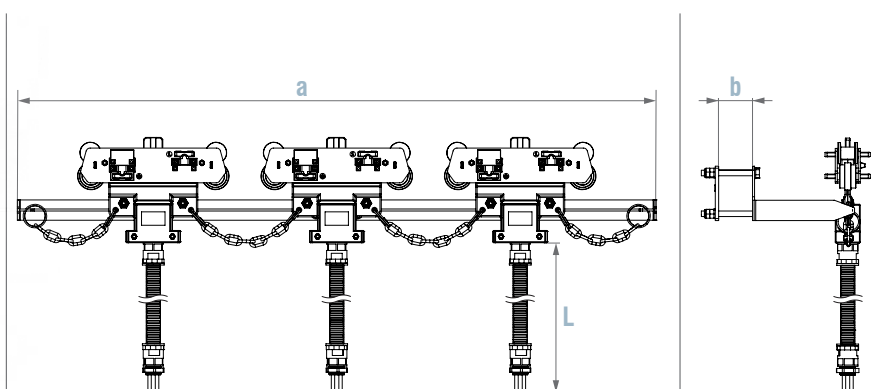
Product Code	Weight (kg)	Dimensions (mm)		
		a	b	L
VS3014T2-C5	3,75	670	30-50	1000



### Collector Trolley (5P)(C3 Type) VS3014T3-C5



Product Code	Weight (kg)	Dimensions (mm)		
		a	b	L
VS3014T3-C5	5,18	940	30-50	1000



■ Towing Arm (C1 Type)  
VS3014P1-C1



Product Code	Material	Weight (kg)	Dimensions (mm)						
			a	b <sub>1</sub>	b <sub>2</sub>	b <sub>3</sub>	b <sub>4</sub>	b <sub>5</sub>	c
VS3014P1-C1	Steel	1,39	400	30-50	100	120	140	150	80

■ Towing Arm (C2 Type)  
VS3014P1-C2



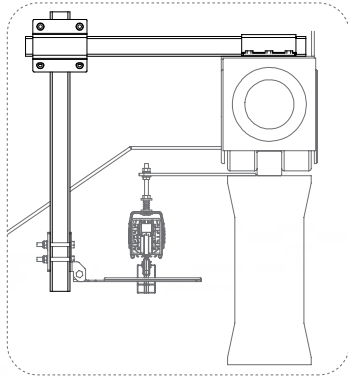
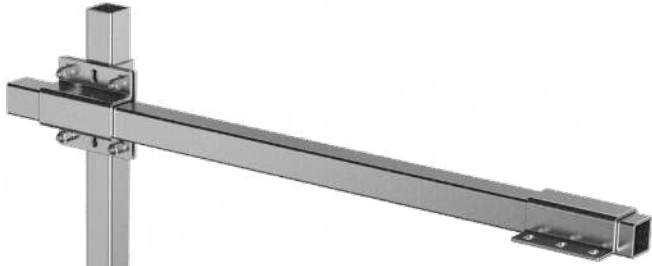
Product Code	Material	Weight (kg)	Dimensions (mm)						
			a	b <sub>1</sub>	b <sub>2</sub>	b <sub>3</sub>	b <sub>4</sub>	b <sub>5</sub>	c
VS3014P1-C2	Steel	1,75	670	30-50	100	120	140	150	80

■ Towing Arm (C3 Type)  
VS3014P1-C3



Product Code	Material	Weight (kg)	Dimensions (mm)						
			a	b <sub>1</sub>	b <sub>2</sub>	b <sub>3</sub>	b <sub>4</sub>	b <sub>5</sub>	c
VS3014P1-C3	Steel	2,18	940	30-50	100	120	140	150	80

## ■ Towing Arm Set (AS40 type)(870-920) VS1008AT40-S (870-920)



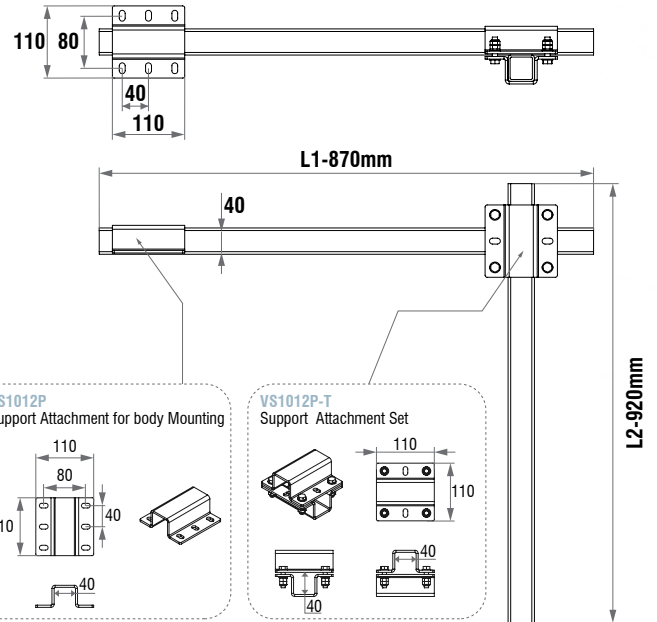
\*This product is between different sizes can be produced. Please contact our company with system requirements

### Product Code

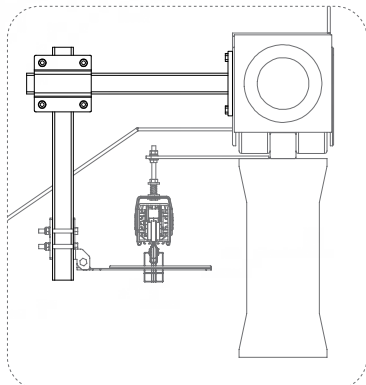
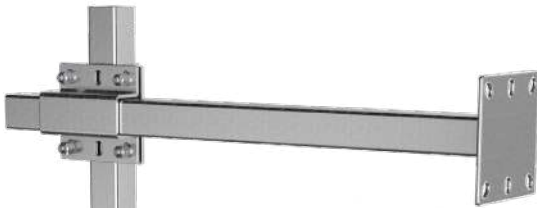
VS1008AT40-S (870-920)

### Material

Steel (galvanised)



## ■ Towing Arm Set (BS40 type) (630-920) VS1008BT40-S (630-920)



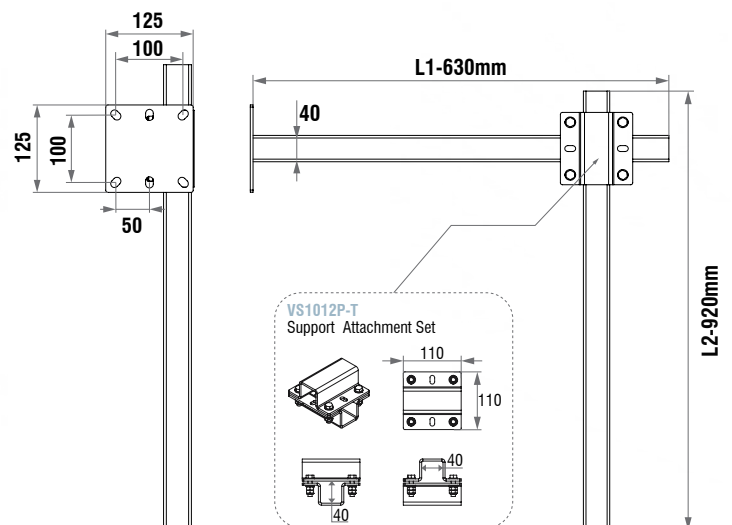
\*This product is between different sizes can be produced. Please contact our company with system requirements

### Product Code

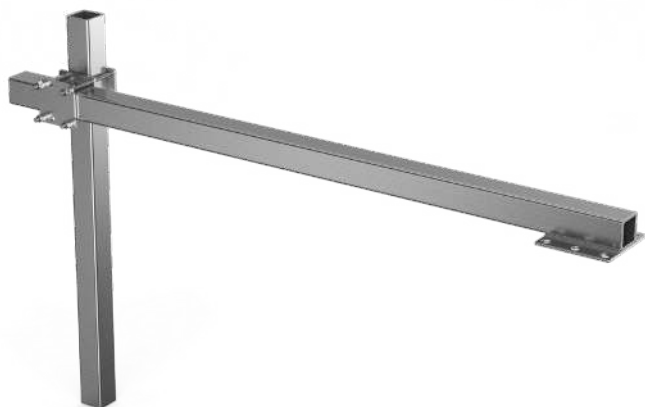
VS1008BT40-S (630-920)

### Material

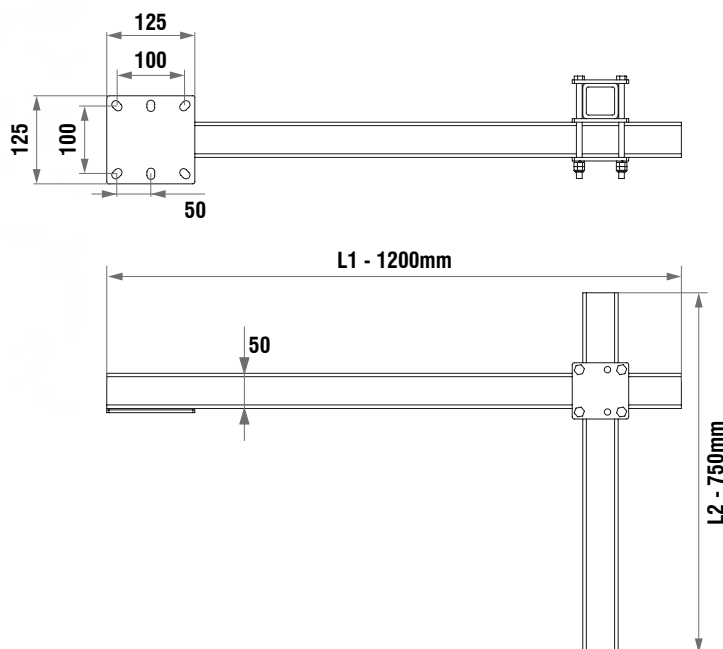
Steel (galvanised)



**Towing Arm Set (AS50 type) (1200-750)**  
**VS1008AT50-S (1200-750)**



Product Code	Material
VS1008AT50-S (1200-750)	Steel (galvanised)

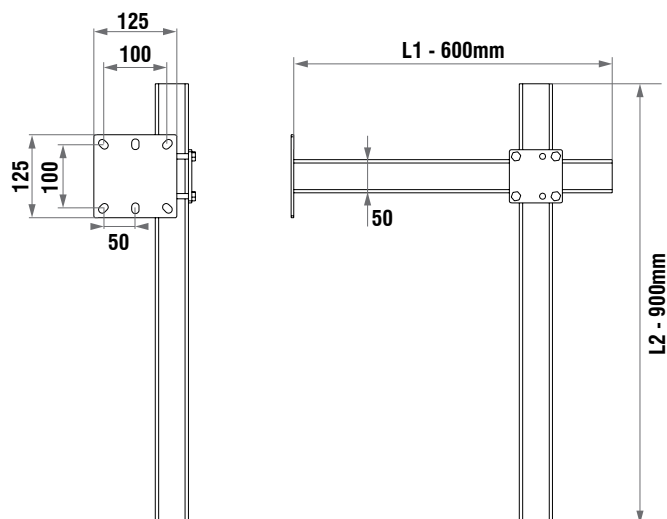


*\*This product is between different sizes can be produced. Please contact our company with system requirements*

**Towing Arm Set (BS50 type) (600-900)**  
**VS1008BT50-S (600-900)**



Product Code	Material
VS1008BT50-S (600-900)	Steel (galvanised)



*\*This product is between different sizes can be produced. Please contact our company with system requirements*

## ■ Towing Arm Set (AD40 type) (870-920-400)

### VS1008AT40-D (870-920-400)



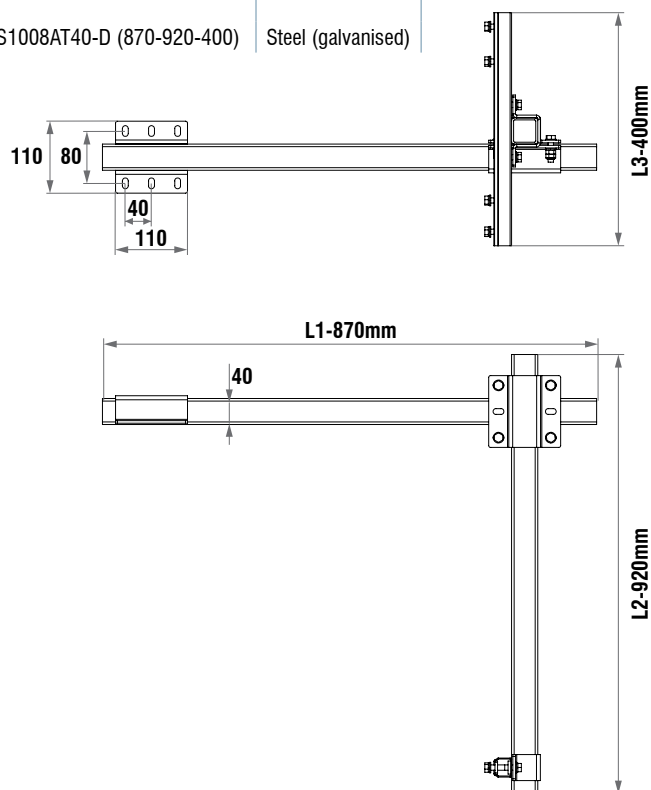
*\*This product is between different sizes can be produced. Please contact our company with system requirements*

#### Product Code

VS1008AT40-D (870-920-400)

#### Material

Steel (galvanised)



## ■ Towing Arm Set (BD40 type) (630-920-400)

### VS1008BT40-D (630-920-400)



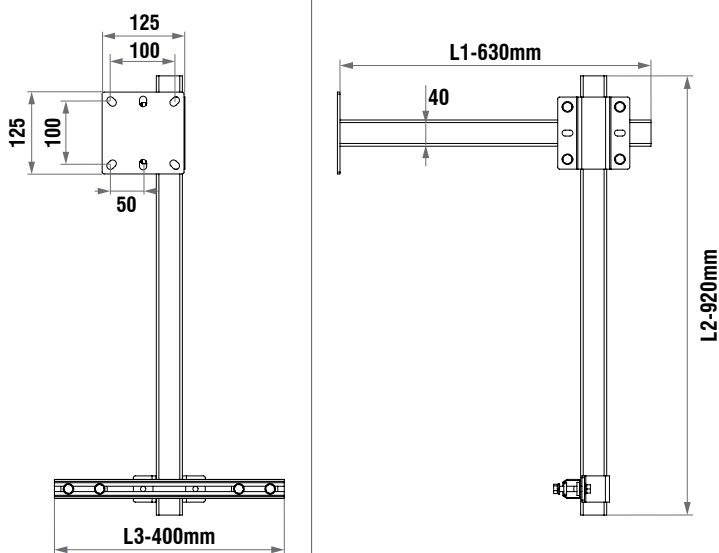
*\*This product is between different sizes can be produced. Please contact our company with system requirements*

#### Product Code

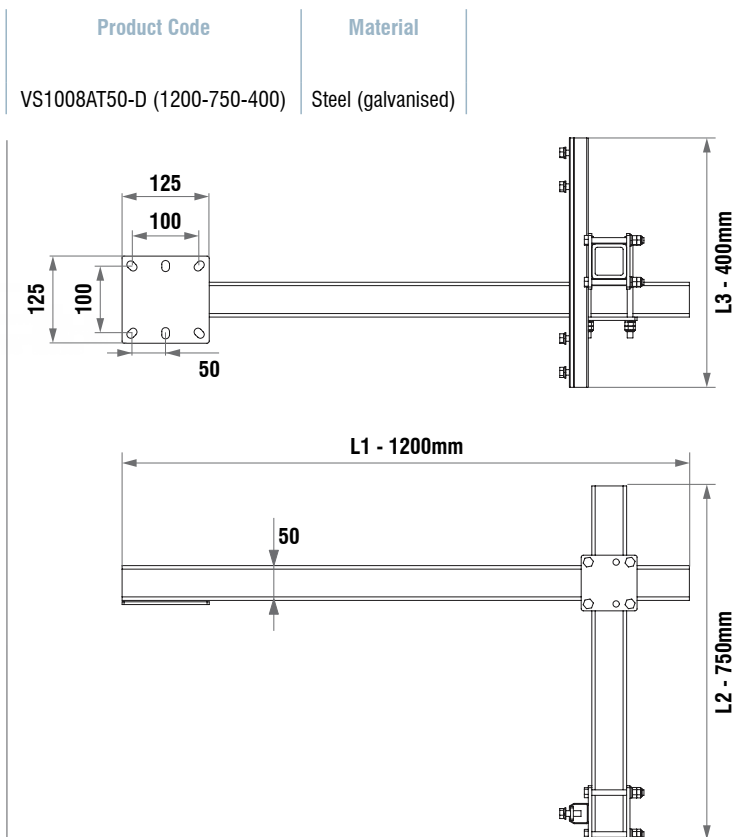
VS1008BT40-D (630-920-400)

#### Material

Steel (galvanised)

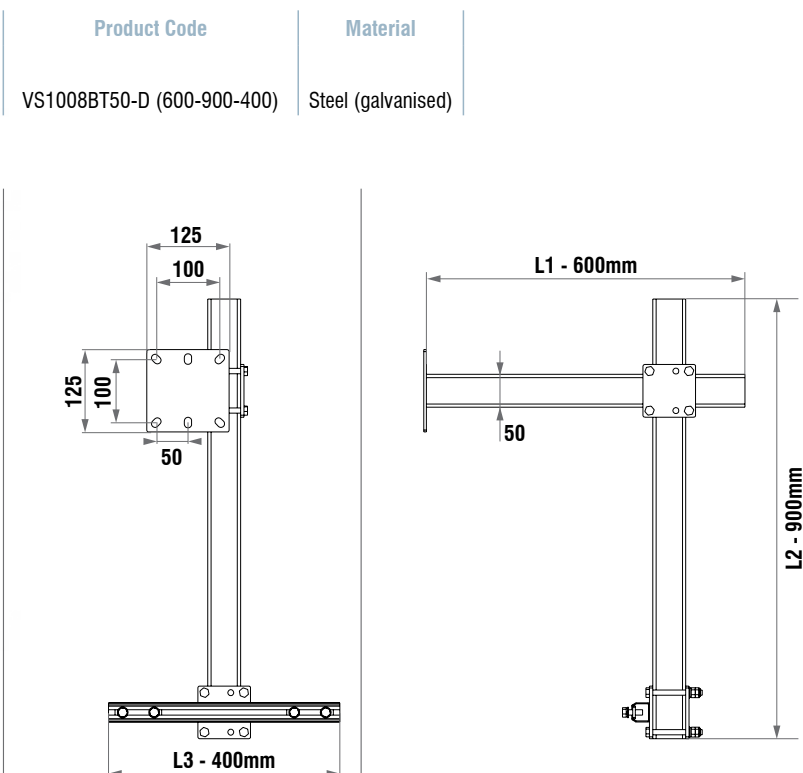


**Towing Arm Set (AD50 type) (1200-750-400)**  
**VS1008AT50-D (1200-750-400)**



*\*This product is between different sizes can be produced. Please contact our company with system requirements*

**Towing Arm Set (BD50 type) (600-900-400)**  
**VS1008BT50-D (600-900-400)**



*\*This product is between different sizes can be produced. Please contact our company with system requirements*

**vasel**<sup>®</sup>  
Electromechanic



**VASEL ELEKTROMEKANİK METAL PLASTİK SAN. TİC. LTD. ŞTİ.**

Büsan 4 OSB Fevzi Çakmak Mh. Milenyum Cd. 28/F

P.B.: 42050 - Karatay / KONYA / TÜRKİYE

Phone :+90 332 235 35 10

Fax :+90 332 235 35 68

E-mail : [info@vasel.com.tr](mailto:info@vasel.com.tr)

